



## Apple Streusel Bread

 Dairy Free

READY IN



45 min.

SERVINGS



32

CALORIES



105 kcal

BREAD

### Ingredients

- 21 ounce lucky leaf® premium apple pie filling canned
- 2 teaspoons apple pie spice
- 1 cup musselman's® original apple sauce
- 2.5 cups d baking mix
- 0.8 cup brown sugar divided packed
- 0.7 cup cooking oil
- 4 eggs beaten
- 0.5 cup flour

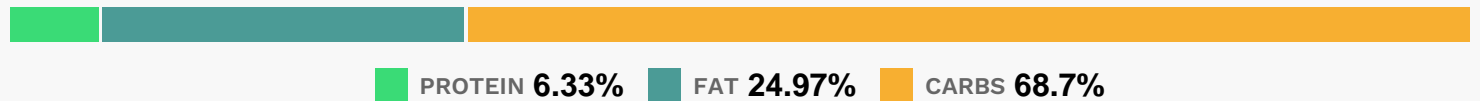
## Equipment

- bowl
- oven
- wire rack
- loaf pan
- toothpicks

## Directions

- Preheat oven to 350 degrees F. Grease and flour two 8x4x2-inch loaf pans.
- In a large bowl combine baking mix, flour, and apple pie spice. In another large bowl combine eggs, LUCKY LEAF Apple Pie Filling, MUSSELMAN'S Apple Sauce, 1/2 cup of the brown sugar, and oil.
- Add to flour mixture. Stir just until moistened. Divide batter evenly between prepared pans. Top each loaf with remaining brown sugar and walnuts (if using).
- Bake for 55 to 60 minutes or until a toothpick inserted in the center comes out clean. Cool in pans on wire rack for 10 minutes.
- Remove from pans and cool completely on wire rack. Wrap and store overnight for easier slicing.

## Nutrition Facts



## Properties

Glycemic Index:2.34, Glycemic Load:1.08, Inflammation Score:-1, Nutrition Score:2.4195652137632%

## Flavonoids

Catechin: 0.05mg, Catechin: 0.05mg, Catechin: 0.05mg, Catechin: 0.05mg Epicatechin: 0.41mg, Epicatechin: 0.41mg, Epicatechin: 0.41mg, Epicatechin: 0.41mg Quercetin: 0.15mg, Quercetin: 0.15mg, Quercetin: 0.15mg, Quercetin: 0.15mg

## Nutrients (% of daily need)

Calories: 105.18kcal (5.26%), Fat: 2.96g (4.56%), Saturated Fat: 0.62g (3.9%), Carbohydrates: 18.33g (6.11%), Net Carbohydrates: 17.79g (6.47%), Sugar: 9.41g (10.46%), Cholesterol: 20.65mg (6.88%), Sodium: 137.88mg (5.99%), Alcohol: 0g (100%), Alcohol %: 0% (100%), Protein: 1.69g (3.38%), Phosphorus: 69.88mg (6.99%), Vitamin B1: 0.08mg (5.05%), Vitamin B2: 0.08mg (4.72%), Selenium: 3.21µg (4.58%), Folate: 18.19µg (4.55%), Manganese: 0.08mg (3.84%), Iron: 0.58mg (3.22%), Vitamin B3: 0.57mg (2.83%), Calcium: 26.34mg (2.63%), Fiber: 0.54g (2.15%), Vitamin B5: 0.19mg (1.93%), Copper: 0.04mg (1.83%), Vitamin E: 0.26mg (1.71%), Vitamin B12: 0.09µg (1.43%), Vitamin K: 1.46µg (1.39%), Potassium: 46.66mg (1.33%), Vitamin B6: 0.03mg (1.25%), Magnesium: 4.67mg (1.17%), Zinc: 0.16mg (1.03%)