



Cake Mix Fudgy Peppermint Cookies

READY IN



55 min.

SERVINGS



32

CALORIES



116 kcal

DESSERT

Ingredients

- 1 box duncan hines devil's food cake
- 0.5 cup vegetable oil
- 1 teaspoon vanilla
- 2 eggs
- 8 oz baker's chocolate dark chopped
- 0.5 cup whipping cream
- 1 cup candy canes crushed (40)

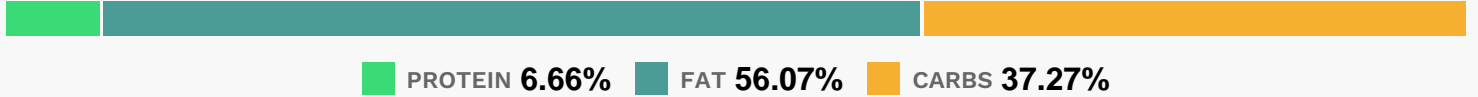
Equipment

- bowl
- baking sheet
- oven
- wire rack
- microwave

Directions

- Heat oven to 350°F. In large bowl, stir cake mix, oil, vanilla and eggs until soft dough forms. Shape dough into 1-inch balls. On ungreased cookie sheet, place balls 1 inch apart.
- Bake 10 to 12 minutes or until set. Cool 1 minute.
- Remove from cookie sheet to cooling rack. Cool completely, about 30 minutes.
- In medium microwavable bowl, microwave dark chocolate and whipping cream uncovered on High 30 seconds or until warm. Stir until chocolate is melted and mixture is smooth.
- Spread chocolate mixture over cookies; sprinkle with crushed candy.

Nutrition Facts



Properties

Glycemic Index:0, Glycemic Load:0, Inflammation Score:-2, Nutrition Score:4.204782621935%

Flavonoids

Catechin: 4.56mg, Catechin: 4.56mg, Catechin: 4.56mg, Catechin: 4.56mg Epicatechin: 10.05mg, Epicatechin: 10.05mg, Epicatechin: 10.05mg, Epicatechin: 10.05mg

Nutrients (% of daily need)

Calories: 116.25kcal (5.81%), Fat: 8.1g (12.46%), Saturated Fat: 3.78g (23.62%), Carbohydrates: 12.11g (4.04%), Net Carbohydrates: 10.61g (3.86%), Sugar: 5.37g (5.97%), Cholesterol: 14.43mg (4.81%), Sodium: 118mg (5.13%), Alcohol: 0.04g (100%), Alcohol %: 0.14% (100%), Caffeine: 7.15mg (2.38%), Protein: 2.16g (4.33%), Manganese: 0.33mg (16.33%), Copper: 0.29mg (14.28%), Iron: 1.89mg (10.52%), Magnesium: 30.13mg (7.53%), Phosphorus: 72.41mg (7.24%), Fiber: 1.5g (6%), Zinc: 0.84mg (5.57%), Selenium: 3.2µg (4.58%), Potassium: 110.89mg (3.17%), Calcium: 31.42mg (3.14%), Folate: 11.8µg (2.95%), Vitamin B2: 0.05mg (2.84%), Vitamin K: 2.58µg (2.46%), Vitamin B1: 0.04mg (2.35%), Vitamin E: 0.3mg (1.98%), Vitamin B3: 0.32mg (1.59%), Vitamin A: 69.92IU (1.4%)