



## Chocolate-Raspberry Napoleons

 Popular

READY IN



40 min.

SERVINGS



12

CALORIES



360 kcal

SIDE DISH

### Ingredients

- 6 oz philadelphia cream cheese softened ()
- 0.5 cup powdered sugar
- 1 sheet puff pastry frozen thawed ()
- 6 oz raspberries fresh (1-)
- 2 Tbsp raspberry-flavored liqueur
- 7 oz baker's semi-sweet chocolate divided
- 1 cup whipping cream

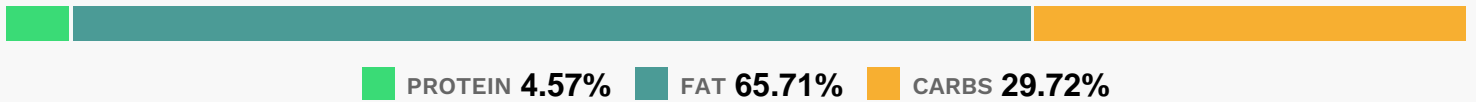
### Equipment

- bowl
- baking sheet
- oven
- whisk
- blender

## Directions

- Heat oven to 400F.
- Unfold pastry sheet on lightly floured surface; cut along fold lines into 3 rectangles.
- Cut each rectangle crosswise into 4 smaller rectangles; place on baking sheet.
- Bake 15 min. or until golden brown.
- Remove to wire racks; cool completely.
- Meanwhile, melt 6 oz. chocolate as directed on package; set aside. Beat whipping cream in medium bowl with mixer on high speed until soft peaks form.
- Beat melted chocolate, cream cheese, powdered sugar and liqueur in large bowl with mixer on medium speed until well blended.
- Whisk in whipped cream.
- Split each pastry rectangle in half.
- Spread each bottom half with 3 Tbsp. chocolate mixture. Cover with raspberries and pastry tops. Melt remaining chocolate; drizzle over pastries.

## Nutrition Facts



## Properties

Glycemic Index:9.08, Glycemic Load:5.4, Inflammation Score:-5, Nutrition Score:6.7369564357011%

## Flavonoids

Cyanidin: 6.49mg, Cyanidin: 6.49mg, Cyanidin: 6.49mg, Cyanidin: 6.49mg Petunidin: 0.04mg, Petunidin: 0.04mg, Petunidin: 0.04mg, Petunidin: 0.04mg Delphinidin: 0.19mg, Delphinidin: 0.19mg, Delphinidin: 0.19mg, Delphinidin: 0.19mg Malvidin: 0.02mg, Malvidin: 0.02mg, Malvidin: 0.02mg, Malvidin: 0.02mg Pelargonidin: 0.14mg, Pelargonidin:

0.14mg, Pelargonidin: 0.14mg, Pelargonidin: 0.14mg Peonidin: 0.02mg, Peonidin: 0.02mg, Peonidin: 0.02mg, Peonidin: 0.02mg Catechin: 0.19mg, Catechin: 0.19mg, Catechin: 0.19mg, Catechin: 0.19mg Epigallocatechin: 0.07mg, Epigallocatechin: 0.07mg, Epigallocatechin: 0.07mg, Epigallocatechin: 0.07mg Epicatechin: 0.5mg, Epicatechin: 0.5mg, Epicatechin: 0.5mg Epigallocatechin 3-gallate: 0.08mg, Epigallocatechin 3-gallate: 0.08mg, Epigallocatechin 3-gallate: 0.08mg, Epigallocatechin 3-gallate: 0.08mg Kaempferol: 0.01mg, Kaempferol: 0.01mg, Kaempferol: 0.01mg Quercetin: 0.15mg, Quercetin: 0.15mg, Quercetin: 0.15mg, Quercetin: 0.15mg

## **Nutrients (% of daily need)**

Calories: 359.81kcal (17.99%), Fat: 26.25g (40.38%), Saturated Fat: 13.04g (81.52%), Carbohydrates: 26.7g (8.9%), Net Carbohydrates: 24.15g (8.78%), Sugar: 13.66g (15.17%), Cholesterol: 37.72mg (12.57%), Sodium: 102.8mg (4.47%), Alcohol: 0.65g (100%), Alcohol %: 0.89% (100%), Caffeine: 14.87mg (4.96%), Protein: 4.11g (8.22%), Manganese: 0.42mg (20.81%), Copper: 0.25mg (12.42%), Selenium: 8.21µg (11.73%), Fiber: 2.55g (10.2%), Vitamin A: 495.07IU (9.9%), Magnesium: 38.23mg (9.56%), Iron: 1.71mg (9.48%), Phosphorus: 86.18mg (8.62%), Vitamin B2: 0.14mg (8.38%), Vitamin B1: 0.1mg (6.56%), Vitamin K: 6.52µg (6.21%), Vitamin B3: 1.1mg (5.52%), Folate: 20.97µg (5.24%), Zinc: 0.73mg (4.84%), Potassium: 166.03mg (4.74%), Vitamin C: 3.83mg (4.65%), Calcium: 42.75mg (4.28%), Vitamin E: 0.64mg (4.24%), Vitamin B5: 0.23mg (2.28%), Vitamin D: 0.32µg (2.12%), Vitamin B6: 0.03mg (1.63%), Vitamin B12: 0.09µg (1.54%)