



## Chocolate-Strawberry Crumble

 Dairy Free

READY IN



90 min.

SERVINGS



16

CALORIES



318 kcal

DESSERT

### Ingredients

- 42 oz strawberry pie filling canned
- 10 oz strawberries frozen thawed
- 1 box duncan hines devil's food cake
- 0.7 cup butter softened
- 0.5 cup walnut pieces chopped
- 1 serving whipped cream

### Equipment

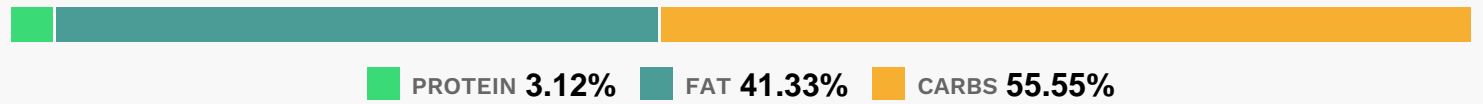
- bowl

- frying pan
- oven
- hand mixer

## Directions

- Heat oven to 350°F (325°F for dark or nonstick pan). In ungreased 13x9-inch pan, pour pie filling and strawberries; stir gently to mix.
- In large bowl, beat cake mix and butter with electric mixer on low speed until crumbly, about 1 to 2 minutes. Crumble over fruit mixture.
- Sprinkle with walnuts.
- Bake 40 to 45 minutes or until bubbly around edges and top is set. Cool at least 30 minutes.
- Serve warm with ice cream. Store loosely covered.

## Nutrition Facts



## Properties

Glycemic Index:7.56, Glycemic Load:1.03, Inflammation Score:-4, Nutrition Score:6.0730434754944%

## Flavonoids

Cyanidin: 0.4mg, Cyanidin: 0.4mg, Cyanidin: 0.4mg, Cyanidin: 0.4mg Petunidin: 0.02mg, Petunidin: 0.02mg, Petunidin: 0.02mg, Petunidin: 0.02mg Delphinidin: 0.05mg, Delphinidin: 0.05mg, Delphinidin: 0.05mg, Delphinidin: 0.05mg Pelargonidin: 4.4mg, Pelargonidin: 4.4mg, Pelargonidin: 4.4mg, Pelargonidin: 4.4mg Peonidin: 0.01mg, Peonidin: 0.01mg, Peonidin: 0.01mg, Peonidin: 0.01mg Catechin: 0.55mg, Catechin: 0.55mg, Catechin: 0.55mg, Catechin: 0.55mg Epigallocatechin: 0.14mg, Epigallocatechin: 0.14mg, Epigallocatechin: 0.14mg, Epigallocatechin: 0.14mg Epicatechin: 0.07mg, Epicatechin: 0.07mg, Epicatechin: 0.07mg, Epicatechin: 0.07mg Epicatechin 3-gallate: 0.03mg, Epicatechin 3-gallate: 0.03mg, Epicatechin 3-gallate: 0.03mg, Epicatechin 3-gallate: 0.03mg Epigallocatechin 3-gallate: 0.02mg, Epigallocatechin 3-gallate: 0.02mg, Epigallocatechin 3-gallate: 0.02mg, Epigallocatechin 3-gallate: 0.02mg Naringenin: 0.05mg, Naringenin: 0.05mg, Naringenin: 0.05mg, Naringenin: 0.05mg Kaempferol: 0.09mg, Kaempferol: 0.09mg, Kaempferol: 0.09mg, Kaempferol: 0.09mg Myricetin: 0.01mg, Myricetin: 0.01mg, Myricetin: 0.01mg, Myricetin: 0.01mg Quercetin: 0.2mg, Quercetin: 0.2mg, Quercetin: 0.2mg, Quercetin: 0.2mg Gallocatechin: 0.01mg, Gallocatechin: 0.01mg, Gallocatechin: 0.01mg, Gallocatechin: 0.01mg

## Nutrients (% of daily need)

Calories: 317.99kcal (15.9%), Fat: 14.72g (22.64%), Saturated Fat: 2.97g (18.55%), Carbohydrates: 44.52g (14.84%), Net Carbohydrates: 42.37g (15.41%), Sugar: 27.93g (31.04%), Cholesterol: 1.82mg (0.61%), Sodium: 333mg (14.48%), Alcohol: 0g (100%), Alcohol %: 0% (100%), Protein: 2.5g (4.99%), Vitamin C: 26.27mg (31.84%), Manganese: 0.25mg (12.69%), Phosphorus: 96.31mg (9.63%), Iron: 1.71mg (9.51%), Copper: 0.18mg (8.78%), Fiber: 2.15g (8.59%), Calcium: 72.52mg (7.25%), Vitamin A: 359.36IU (7.19%), Folate: 24.88µg (6.22%), Magnesium: 21.63mg (5.41%), Selenium: 3.67µg (5.25%), Vitamin E: 0.68mg (4.55%), Vitamin B1: 0.07mg (4.35%), Potassium: 144.51mg (4.13%), Vitamin B2: 0.07mg (3.88%), Vitamin B3: 0.55mg (2.74%), Zinc: 0.38mg (2.55%), Vitamin B6: 0.04mg (2.07%), Vitamin K: 1.53µg (1.45%), Vitamin B5: 0.11mg (1.12%)