



## Double-Cherry Cheesecake Cobbler

READY IN



45 min.

SERVINGS



1

CALORIES



3202 kcal

DESSERT

### Ingredients

- 0.3 teaspoon almond extract
- 0.3 cup butter divided melted
- 21 ounce cherry pie filling canned
- 8 ounce cream cheese softened
- 1 large eggs
- 0.3 cup flour all-purpose
- 0.3 cup sugar
- 15 ounce cherries dark sweet drained canned
- 1 teaspoon vanilla extract

20 vanilla wafers crushed

## Equipment

sauce pan

oven

hand mixer

## Directions

Beat cream cheese, sugar, and flour at low speed with an electric mixer; add egg and extracts, beating until smooth. Set aside.

Stir together cherries, cherry pie filling, and 2 tablespoons melted butter in a large saucepan, and cook over medium heat, stirring often, 5 minutes or until thoroughly heated. Spoon hot cherry mixture into a lightly greased 9-inch deep-dish pie plate. Spoon cream cheese mixture evenly over hot cherries.

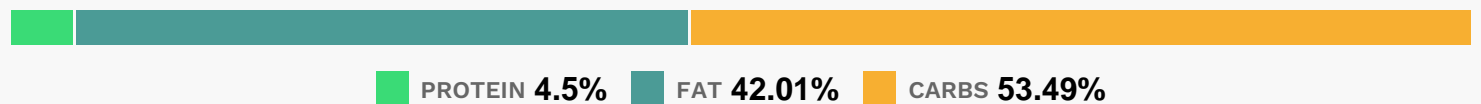
Combine crushed vanilla wafers and remaining 2 tablespoons melted butter.

Sprinkle evenly over cream cheese mixture.

Bake at 350 for 30 minutes or until golden brown and set.

Let stand 15 minutes before serving.

## Nutrition Facts



## Properties

Glycemic Index:321.09, Glycemic Load:152.2, Inflammation Score:-10, Nutrition Score:45.010869482289%

## Flavonoids

Cyanidin: 128.47mg, Cyanidin: 128.47mg, Cyanidin: 128.47mg, Cyanidin: 128.47mg Pelargonidin: 1.15mg, Pelargonidin: 1.15mg, Pelargonidin: 1.15mg, Pelargonidin: 1.15mg Peonidin: 6.38mg, Peonidin: 6.38mg, Peonidin: 6.38mg, Peonidin: 6.38mg Catechin: 18.54mg, Catechin: 18.54mg, Catechin: 18.54mg, Catechin: 18.54mg Epigallocatechin: 1.45mg, Epigallocatechin: 1.45mg, Epigallocatechin: 1.45mg Epicatechin: 21.26mg, Epicatechin: 21.26mg, Epicatechin: 21.26mg, Epicatechin: 21.26mg Epicatechin 3-gallate: 0.21mg, Epicatechin 3-gallate: 0.21mg, Epicatechin 3-gallate: 0.21mg, Epicatechin 3-gallate: 0.21mg Isorhamnetin: 0.21mg, Isorhamnetin: 0.21mg, Isorhamnetin: 0.21mg, Isorhamnetin: 0.21mg Kaempferol: 1.02mg, Kaempferol: 1.02mg, Kaempferol: 1.02mg, Kaempferol: 1.02mg

Kaempferol: 1.02mg Myricetin: 0.21mg, Myricetin: 0.21mg, Myricetin: 0.21mg, Myricetin: 0.21mg Quercetin: 9.74mg, Quercetin: 9.74mg, Quercetin: 9.74mg, Quercetin: 9.74mg

## Nutrients (% of daily need)

Calories: 3201.86kcal (160.09%), Fat: 151.57g (233.18%), Saturated Fat: 83.72g (523.26%), Carbohydrates: 434.2g (144.73%), Net Carbohydrates: 418.89g (152.32%), Sugar: 168.38g (187.08%), Cholesterol: 538.28mg (179.43%), Sodium: 1739.55mg (75.63%), Alcohol: 1.72g (100%), Alcohol %: 0.14% (100%), Protein: 36.55g (73.1%), Vitamin A: 6226.66IU (124.53%), Vitamin B2: 1.5mg (88.49%), Vitamin B1: 1.17mg (78.02%), Selenium: 52.33µg (74.75%), Folate: 268.29µg (67.07%), Phosphorus: 629.59mg (62.96%), Vitamin C: 51.2mg (62.06%), Fiber: 15.31g (61.23%), Potassium: 2105.25mg (60.15%), Copper: 0.88mg (43.83%), Manganese: 0.81mg (40.68%), Calcium: 389.85mg (38.98%), Vitamin B3: 7.36mg (36.79%), Vitamin B5: 3.53mg (35.27%), Iron: 6.07mg (33.71%), Vitamin B6: 0.66mg (33.1%), Magnesium: 125.76mg (31.44%), Vitamin E: 4.11mg (27.43%), Zinc: 2.73mg (18.19%), Vitamin B12: 1.04µg (17.34%), Vitamin K: 17.94µg (17.09%), Vitamin D: 1µg (6.67%)