



Fantasyland Pull Apart Cupcakes

READY IN



145 min.

SERVINGS



48

CALORIES



292 kcal

DESSERT

Ingredients

- 8 candy canes ()
- 0.3 teaspoon purple gel food coloring blue
- 0.3 teaspoon purple gel food coloring green
- 14 oz fruit (55 candies)
- 38 small gumdrops
- 3 ice cream cake cones with pointed ends sugar-style
- 4.4 oz chocolate
- 3 lb vanilla frosting
- 2 boxes cake mix white

- 12 fruit assorted sphere-shaped fruit-flavored

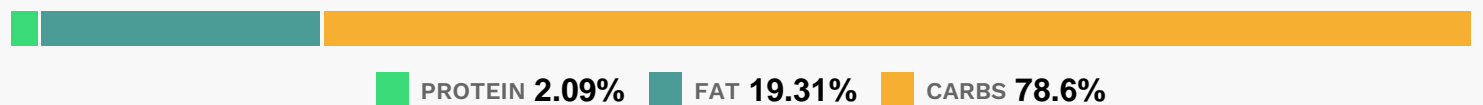
Equipment

- oven
- muffin liners

Directions

- Heat oven to 350F.
- Place paper baking cup in each of 48 regular-size muffin cups. Make and bake cake mix as directed on box for cupcakes, using water, oil and egg whites. Cool 10 minutes; remove cupcakes from pans to cooling racks. Cool completely.
- Place cupcakes on platter, fitting snugly together and forming rectangle. Frost cupcakes with 1 container of frosting. Refrigerate 30 minutes. Tint 1 container of frosting with green food color. Tint remaining container of frosting with blue food color.
- Spread green frosting over cupcakes, leaving 3 cupcakes white in each of 3 corners. Frost the 3 corners of white cupcakes with some of the blue frosting. Arrange fruit chews on cupcakes to look like walkway. Fill ice cream cones with remaining blue frosting; top each with a gumdrop.
- Place ice cream cones in one area. Stand chocolate pieces and candy canes in other corners. Arrange lollipops to look like a forest.
- Place remaining gumdrops randomly on cupcakes.

Nutrition Facts



Properties

Glycemic Index:3.41, Glycemic Load:10.84, Inflammation Score:-3, Nutrition Score:4.4978261201278%

Nutrients (% of daily need)

Calories: 291.72kcal (14.59%), Fat: 6.41g (9.87%), Saturated Fat: 1.8g (11.25%), Carbohydrates: 58.74g (19.58%), Net Carbohydrates: 56.41g (20.51%), Sugar: 43.39g (48.21%), Cholesterol: 0mg (0%), Sodium: 209.66mg (9.12%), Alcohol: 0g (100%), Alcohol %: 0% (100%), Protein: 1.56g (3.13%), Vitamin B2: 0.17mg (9.93%), Phosphorus: 96.28mg (9.63%), Vitamin K: 9.99µg (9.51%), Fiber: 2.32g (9.29%), Vitamin A: 364.72IU (7.29%), Copper: 0.12mg

(6.19%), Calcium: 54.83mg (5.48%), Vitamin B3: 1.08mg (5.39%), Iron: 0.93mg (5.17%), Folate: 20.27µg (5.07%), Manganese: 0.09mg (4.56%), Vitamin B1: 0.07mg (4.36%), Vitamin E: 0.63mg (4.2%), Potassium: 138.42mg (3.95%), Vitamin C: 2.66mg (3.22%), Magnesium: 11.72mg (2.93%), Selenium: 1.99µg (2.84%), Zinc: 0.27mg (1.79%), Vitamin B6: 0.03mg (1.33%), Vitamin B5: 0.13mg (1.32%)