



Firewater

 **Gluten Free**  **Dairy Free**  **Low Fod Map**

READY IN



5 min.

SERVINGS



4

CALORIES



213 kcal

BEVERAGE

DRINK

Ingredients

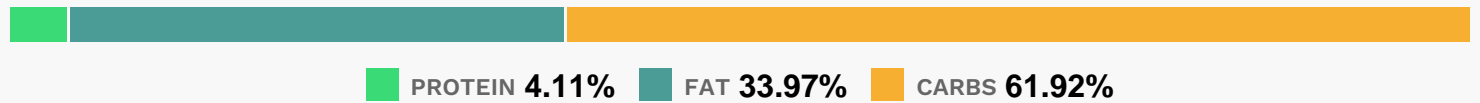
- 0.3 cup general foods international suisse mocha cafe finely chopped
- 0.3 cup rum / brandy / coffee liqueur for rimming the glasses
- 0.3 creme de cocoa dark
- 4 servings ice cubes
- 1 cup strong coffee decoction chilled brewed
- 0.3 cup vanilla vodka
- 0.5 cup vodka black

Equipment

Directions

- Watch how to make this recipe.
- Place the crushed chocolate covered espresso beans into a saucer and 2 tablespoons of the coffee liqueur into another saucer. Dip the rims of 4 martini glasses into the coffee liqueur then into the crushed beans.
- Combine the coffee, black vodka, coffee liqueur, creme de cocoa and vanilla vodka in a pitcher filled with ice. Stir and immediately pour into the rimmed glasses.

Nutrition Facts



Properties

Glycemic Index:7.5, Glycemic Load:0, Inflammation Score:-2, Nutrition Score:1.3682608785837%

Flavonoids

Epigallocatechin: 0.02mg, Epigallocatechin: 0.02mg, Epigallocatechin: 0.02mg, Epigallocatechin: 0.02mg
Epicatechin: 0.02mg, Epicatechin: 0.02mg, Epicatechin: 0.02mg, Epicatechin: 0.02mg Myricetin: 0.03mg,
Myricetin: 0.03mg, Myricetin: 0.03mg, Myricetin: 0.03mg Quercetin: 0.03mg, Quercetin: 0.03mg, Quercetin:
0.03mg, Quercetin: 0.03mg

Nutrients (% of daily need)

Calories: 212.73kcal (10.64%), Fat: 3.24g (4.99%), Saturated Fat: 1.61g (10.06%), Carbohydrates: 13.31g (4.44%), Net Carbohydrates: 12.51g (4.55%), Sugar: 11.44g (12.71%), Cholesterol: 1.38mg (0.46%), Sodium: 8.27mg (0.36%), Alcohol: 18.24g (100%), Alcohol %: 12.45% (100%), Caffeine: 112.84mg (37.61%), Protein: 0.88g (1.77%), Vitamin B2: 0.08mg (4.5%), Copper: 0.07mg (3.72%), Manganese: 0.07mg (3.65%), Magnesium: 13.71mg (3.43%), Fiber: 0.8g (3.19%), Potassium: 65.82mg (1.88%), Phosphorus: 18.37mg (1.84%), Iron: 0.3mg (1.65%), Vitamin B5: 0.16mg (1.62%), Calcium: 13.49mg (1.35%), Zinc: 0.16mg (1.05%)