



Giant Gingerbread House Cookie



Dairy Free

READY IN



75 min.

SERVINGS



12

CALORIES



308 kcal

DESSERT

Ingredients

- ☐ 17.5 oz betty limited edition gingerbread cookie mix
- ☐ 1 serving basic cookie mix for on cookie mix pouch
- ☐ 16 oz vanilla frosting
- ☐ 1 serving cinnamon candies red assorted (gumdrops, peppermints, candy canes, cinnamon candies, candy sprinkles)
- ☐ 1 serving purple gel food coloring green

Equipment

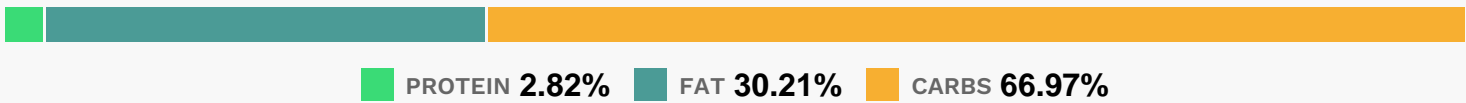
- ☐ frying pan

- ☐ baking paper
- ☐ oven
- ☐ pizza cutter

Directions

- ☐ Heat oven to 350°F. Line 15x10x1-inch pan with cooking parchment paper.
- ☐ Make cookie dough as directed on pouch.
- ☐ Roll dough in pan to about 1/4 inch thick.
- ☐ Bake 10 to 12 minutes or until edges are set and golden brown. Cool 5 minutes.
- ☐ Use pizza cutter to cut gingerbread house shape from cookie dough. Cool completely. Use frosting and candies to decorate gingerbread house as desired. Use any excess cookie pieces as decoration. If desired, color some of the frosting with green food color to make a wreath on the house.
- ☐ Cut into pieces to serve.

Nutrition Facts



Properties

Glycemic Index:3.58, Glycemic Load:11.04, Inflammation Score:-4, Nutrition Score:13.834347816265%

Nutrients (% of daily need)

Calories: 307.99kcal (15.4%), Fat: 11.34g (17.45%), Saturated Fat: 3.82g (23.9%), Carbohydrates: 56.57g (18.86%), Net Carbohydrates: 50.45g (18.34%), Sugar: 29.02g (32.24%), Cholesterol: 0mg (0%), Sodium: 91.14mg (3.96%), Alcohol: 0g (100%), Alcohol %: 0% (100%), Protein: 2.38g (4.77%), Manganese: 6.55mg (327.52%), Iron: 8.21mg (45.61%), Calcium: 283.09mg (28.31%), Fiber: 6.12g (24.48%), Vitamin K: 16.66µg (15.86%), Magnesium: 56.6mg (14.15%), Vitamin C: 9.67mg (11.73%), Vitamin B2: 0.17mg (10.05%), Copper: 0.2mg (10.01%), Vitamin E: 1.38mg (9.18%), Vitamin B6: 0.17mg (8.27%), Potassium: 286.99mg (8.2%), Zinc: 1.01mg (6.71%), Phosphorus: 55.59mg (5.56%), Selenium: 3.88µg (5.55%), Vitamin B3: 1.01mg (5.05%), Vitamin B1: 0.06mg (3.86%), Folate: 12.95µg (3.24%), Vitamin A: 107.91IU (2.16%)