



Glazed Almond Sugar Cookies

READY IN



45 min.

SERVINGS



40

CALORIES



107 kcal

DESSERT

Ingredients

- 1 serving you will also need: parchment paper
- 17.5 oz sugar cookie mix
- 0.5 cup butter softened
- 0.5 cup slivered almonds chopped
- 0.5 teaspoon almond extract
- 1 eggs
- 2 cups powdered sugar
- 0.3 teaspoon almond extract
- 3 teaspoons half and half

0.3 cup almonds toasted

Equipment

bowl

baking sheet

baking paper

oven

Directions

Make cookie dough by blending cookie mix, butter, almonds, extract and egg until soft dough forms.

Roll dough into about 40 (1-inch) balls.

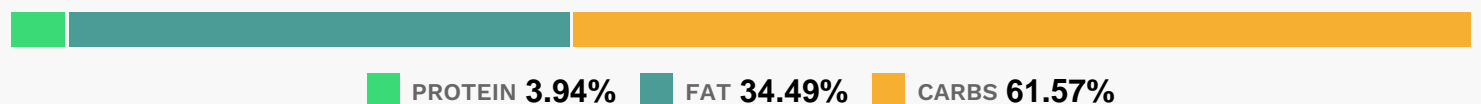
Place about 2 inches apart on Reynolds Parchment Paper lined cookie sheets.

Bake at 375°F 7 to 9 minutes or until set. Cool; place cookies on cooling racks. Cool completely.

In small bowl, stir powdered sugar, 1/4 teaspoon extract and just enough milk until glaze is spreadable but thick.

Spread glaze onto each cookie; top with 3 almond slices.

Nutrition Facts



Properties

Glycemic Index:0.5, Glycemic Load:0.02, Inflammation Score:-1, Nutrition Score:0.99130436470327%

Flavonoids

Cyanidin: 0.05mg, Cyanidin: 0.05mg, Cyanidin: 0.05mg, Cyanidin: 0.05mg Catechin: 0.03mg, Catechin: 0.03mg, Catechin: 0.03mg, Catechin: 0.03mg Epigallocatechin: 0.05mg, Epigallocatechin: 0.05mg, Epigallocatechin: 0.05mg, Epigallocatechin: 0.05mg Epicatechin: 0.01mg, Epicatechin: 0.01mg, Epicatechin: 0.01mg, Epicatechin: 0.01mg Eriodictyol: 0.01mg, Eriodictyol: 0.01mg, Eriodictyol: 0.01mg, Eriodictyol: 0.01mg Naringenin: 0.01mg, Naringenin: 0.01mg, Naringenin: 0.01mg, Naringenin: 0.01mg Isorhamnetin: 0.06mg, Isorhamnetin: 0.06mg, Isorhamnetin: 0.06mg, Isorhamnetin: 0.06mg Kaempferol: 0.01mg, Kaempferol: 0.01mg, Kaempferol: 0.01mg, Kaempferol: 0.01mg Quercetin: 0.01mg, Quercetin: 0.01mg, Quercetin: 0.01mg, Quercetin: 0.01mg

Nutrients (% of daily need)

Calories: 107.08kcal (5.35%), Fat: 4.16g (6.4%), Saturated Fat: 0.62g (3.84%), Carbohydrates: 16.7g (5.57%), Net Carbohydrates: 16.44g (5.98%), Sugar: 11.74g (13.05%), Cholesterol: 4.23mg (1.41%), Sodium: 64.27mg (2.79%), Alcohol: 0.03g (100%), Alcohol %: 0.13% (100%), Protein: 1.07g (2.14%), Vitamin E: 0.64mg (4.28%), Manganese: 0.05mg (2.46%), Vitamin A: 108.79IU (2.18%), Vitamin B2: 0.04mg (2.14%), Magnesium: 5.98mg (1.5%), Phosphorus: 13.39mg (1.34%), Copper: 0.02mg (1.16%), Fiber: 0.26g (1.06%)