



## Glazed Almond Sugar Cookies

READY IN



45 min.

SERVINGS



40

CALORIES



107 kcal

DESSERT

### Ingredients

- 0.3 cup almonds toasted
- 0.3 teaspoon almond extract
- 0.5 teaspoon almond extract
- 0.5 cup butter softened
- 1 eggs
- 3 teaspoons half and half
- 2 cups powdered sugar
- 0.5 cup slivered almonds chopped
- 1 pouch sugar cookie mix (1 lb 1.5 oz)

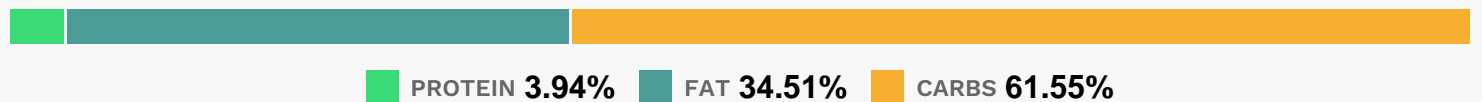
## Equipment

- bowl
- baking sheet
- baking paper
- oven

## Directions

- Make cookie dough by blending cookie mix, butter, almonds, extract and egg until soft dough forms.
- Roll dough into about 40 (1-inch) balls.
- Place about 2 inches apart on Reynolds Parchment Paper lined cookie sheets.
- Bake at 375F 7 to 9 minutes or until set. Cool; place cookies on cooling racks. Cool completely.
- In small bowl, stir powdered sugar, 1/4 teaspoon extract and just enough milk until glaze is spreadable but thick.
- Spread glaze onto each cookie; top with 3 almond slices.

## Nutrition Facts



## Properties

Glycemic Index:0.5, Glycemic Load:0.02, Inflammation Score:-1, Nutrition Score:0.98826088675338%

## Flavonoids

Cyanidin: 0.05mg, Cyanidin: 0.05mg, Cyanidin: 0.05mg, Cyanidin: 0.05mg Catechin: 0.03mg, Catechin: 0.03mg, Catechin: 0.03mg, Catechin: 0.03mg Epigallocatechin: 0.05mg, Epigallocatechin: 0.05mg, Epigallocatechin: 0.05mg, Epigallocatechin: 0.05mg Epicatechin: 0.01mg, Epicatechin: 0.01mg, Epicatechin: 0.01mg, Epicatechin: 0.01mg Eriodictyol: 0.01mg, Eriodictyol: 0.01mg, Eriodictyol: 0.01mg, Eriodictyol: 0.01mg Naringenin: 0.01mg, Naringenin: 0.01mg, Naringenin: 0.01mg, Naringenin: 0.01mg Isorhamnetin: 0.06mg, Isorhamnetin: 0.06mg, Isorhamnetin: 0.06mg, Isorhamnetin: 0.06mg Kaempferol: 0.01mg, Kaempferol: 0.01mg, Kaempferol: 0.01mg, Kaempferol: 0.01mg Quercetin: 0.01mg, Quercetin: 0.01mg, Quercetin: 0.01mg, Quercetin: 0.01mg

## Nutrients (% of daily need)

Calories: 107kcal (5.35%), Fat: 4.16g (6.4%), Saturated Fat: 0.62g (3.84%), Carbohydrates: 16.68g (5.56%), Net Carbohydrates: 16.42g (5.97%), Sugar: 11.74g (13.05%), Cholesterol: 4.22mg (1.41%), Sodium: 64.12mg (2.79%), Alcohol: 0.03g (100%), Alcohol %: 0.13% (100%), Protein: 1.07g (2.13%), Vitamin E: 0.64mg (4.28%), Manganese: 0.05mg (2.45%), Vitamin A: 108.79IU (2.18%), Vitamin B2: 0.04mg (2.14%), Magnesium: 5.98mg (1.49%), Phosphorus: 13.37mg (1.34%), Copper: 0.02mg (1.16%), Fiber: 0.26g (1.06%)