



Heavenly Chocolate Bunny Cake

READY IN



105 min.

SERVINGS



45

CALORIES



144 kcal

DESSERT

Ingredients

- 3 eggs
- 1 pkg chocolate cake mix (2-layer size) (not pudding in the mix variety)
- 45 servings candies such as string licorice and ring-shaped hard candies assorted
- 1 cup miracle whip dressing
- 0.5 cup cocoa powder unsweetened
- 1.3 cups water
- 12 oz cool whip whipped topping thawed

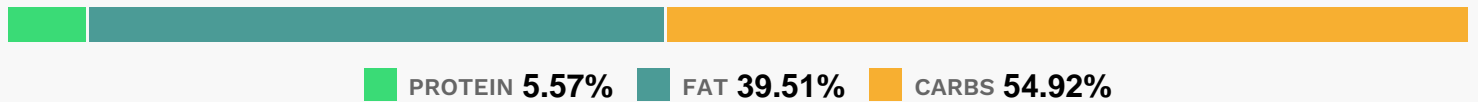
Equipment

- bowl
- oven
- plastic wrap
- hand mixer
- toothpicks
- wax paper
- cutting board

Directions

- Preheat oven to 350F. Grease and flour 2 (8- or 9-inch) round cake pans. Line bottoms of pans with wax paper. Set aside.
- Place cake mix, cocoa, eggs, water and dressing in large bowl of electric mixer. Beat on low speed 30 seconds, stopping frequently to scrape bottom and side of bowl. Beat on medium speed 2 minutes.
- Pour evenly into prepared pans.
- Bake 30 to 35 minutes or until toothpick inserted in centers comes out clean. Cool 10 minutes; remove from pans. Immediately remove wax paper. Cool completely on wire racks.
- Cut 2 oblong ovals from each side of 1 of the cake layers for the bunny's ears. Reserve remaining cake piece for the bow tie. Arrange cake pieces and the whole cake layer on large serving platter or cutting board covered with colored plastic wrap to resemble the bunny's head.
- Spread with the whipped topping. Decorate with candies. Store in refrigerator.

Nutrition Facts



Properties

Glycemic Index:0, Glycemic Load:0, Inflammation Score:-1, Nutrition Score:1.9586956624104%

Flavonoids

Catechin: 0.62mg, Catechin: 0.62mg, Catechin: 0.62mg, Catechin: 0.62mg Epicatechin: 1.88mg, Epicatechin: 1.88mg, Epicatechin: 1.88mg Quercetin: 0.1mg, Quercetin: 0.1mg, Quercetin: 0.1mg, Quercetin:

0.1mg

Nutrients (% of daily need)

Calories: 144.46kcal (7.22%), Fat: 6.55g (10.08%), Saturated Fat: 3.54g (22.13%), Carbohydrates: 20.5g (6.83%), Net Carbohydrates: 19.41g (7.06%), Sugar: 15.45g (17.17%), Cholesterol: 13.82mg (4.61%), Sodium: 144.21mg (6.27%), Alcohol: 0g (100%), Alcohol %: 0% (100%), Caffeine: 3.25mg (1.08%), Protein: 2.08g (4.16%), Iron: 0.81mg (4.53%), Phosphorus: 44.62mg (4.46%), Fiber: 1.1g (4.39%), Calcium: 40.58mg (4.06%), Copper: 0.08mg (3.93%), Selenium: 2.41µg (3.44%), Manganese: 0.06mg (2.94%), Magnesium: 10.23mg (2.56%), Vitamin B2: 0.04mg (2.23%), Folate: 7.86µg (1.97%), Potassium: 60.66mg (1.73%), Vitamin B1: 0.02mg (1.32%), Zinc: 0.19mg (1.25%), Vitamin A: 59.23IU (1.18%), Vitamin E: 0.18mg (1.17%)