



Holiday Candy Trains

READY IN



60 min.

SERVINGS



4

CALORIES



1029 kcal

SIDE DISH

Ingredients

- 12 candy canes miniature
- 4 servings celery stalks
- 80 sticks xanthan gum
- 4 add a hershey's chocolate kiss on top as done kisses®
- 4 servings m&m candies assorted
- 64 peppermint candies
- 18 ounces raisins
- 4 portugese rolls hard ring-shaped
- 4 frangelico green red

4 frangelico green red

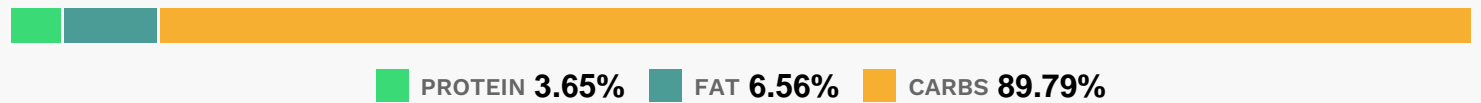
Equipment

aluminum foil

Directions

- For cars of each train, glue end of 1 ribbon onto wide side of 1 gum package, 1 raisin package, 2 more gum packages and 1 more raisin package, spacing cars about 1/2 inch apart. For wheels, glue 4 peppermint candies onto sides of gum packages and 2 candies onto sides of raisin packages.
- For engine, glue roll of ring-shaped candies onto first ribbon-topped gum package. Glue 2 foil-wrapped milk chocolate candies onto top of engine.
- Glue additional candies, candy canes and raisin packages to train cars as shown in photo or as desired.
- Repeat to make remaining 3 trains.

Nutrition Facts



Properties

Glycemic Index:58.45, Glycemic Load:129.7, Inflammation Score:-2, Nutrition Score:14.366521671576%

Flavonoids

Apigenin: 0.03mg, Apigenin: 0.03mg, Apigenin: 0.03mg, Apigenin: 0.03mg Luteolin: 0.01mg, Luteolin: 0.01mg, Luteolin: 0.01mg, Luteolin: 0.01mg

Nutrients (% of daily need)

Calories: 1029.21kcal (51.46%), Fat: 7.74g (11.91%), Saturated Fat: 3.19g (19.91%), Carbohydrates: 238.31g (79.44%), Net Carbohydrates: 211.13g (76.77%), Sugar: 70.37g (78.19%), Cholesterol: 3.4mg (1.13%), Sodium: 348.76mg (15.16%), Alcohol: 0g (100%), Alcohol %: 0% (100%), Protein: 9.67g (19.35%), Fiber: 27.18g (108.71%), Iron: 14.69mg (81.6%), Potassium: 1055.08mg (30.15%), Copper: 0.39mg (19.28%), Manganese: 0.34mg (17.08%), Vitamin B2: 0.23mg (13.69%), Vitamin B6: 0.24mg (12.03%), Magnesium: 38.38mg (9.6%), Phosphorus: 95.92mg (9.59%), Vitamin B1: 0.14mg (9.54%), Vitamin C: 7.01mg (8.5%), Vitamin B3: 1.42mg (7.12%), Calcium: 68.99mg (6.9%), Zinc: 0.23mg (1.54%), Selenium: 0.77µg (1.1%), Folate: 4.19µg (1.05%)