



## Robert Linxe's Chocolate Truffles

 Gluten Free

READY IN



45 min.

SERVINGS



60

CALORIES



35 kcal

ANTIPASTI

STARTER

SNACK

APPETIZER

## Ingredients

☐ 11 ounces valrhona chocolate 56% ( cacao)

☐ 0.7 cup heavy cream

## Equipment

☐ bowl

☐ frying pan

☐ baking sheet

☐ sauce pan

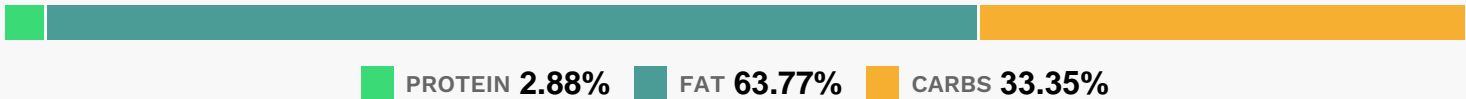
☐ whisk

- ☐ sieve
- ☐ wooden spoon
- ☐ pastry bag

## Directions

- ☐ Finely chop 8 ounces of the chocolate and put in a bowl.
- ☐ Bring heavy cream to a boil in a small heavy saucepan. Make sure your pan is small, so you'll lose the least amount of cream to evaporation, and heavy, which will keep the cream from scorching. Linxe boils his cream three times — he believes that makes the ganache last longer. If you do this, compensate for the extra evaporation by starting with a little more cream.
- ☐ Pour the cream over the chocolate, mashing any big pieces with a wooden spoon.
- ☐ Then stir with a whisk in concentric circles (don't beat or you'll incorporate air), starting in the center and working your way to the edge, until the ganache is smooth.
- ☐ Let stand at room temperature until thick enough to hold a shape, about 1 hour, then, using a pastry bag with a 3/8-inch opening or tip, pipe into mounds (about 3/4 inch high and 1 inch wide) on parchment-lined baking sheets. When piping, finish off each mound with a flick of the wrist to soften and angle the point tip. Freeze until firm, about 15 minutes.
- ☐ Meanwhile, melt 3 more ounces of the same Valrhona and smear some on a gloved hand. Gently rub each chilled truffle to coat lightly with chocolate. The secret to a delicate coating of chocolate is to roll each truffle in a smear of melted chocolate in your hand. Linxe always uses gloves.
- ☐ Toss the truffles in unsweetened Valrhona cocoa powder so they look like their namesakes, freshly dug from the earth. A fork is the best tool for tossing truffles in cacao. Shake truffles in a sieve to eliminate excess cacao. Store truffles in the refrigerator.

## Nutrition Facts



## Properties

Glycemic Index:0.71, Glycemic Load:1.22, Inflammation Score:-1, Nutrition Score:0.53434782135098%

## Nutrients (% of daily need)

Calories: 35.34kcal (1.77%), Fat: 2.73g (4.2%), Saturated Fat: 1.65g (10.32%), Carbohydrates: 3.21g (1.07%), Net Carbohydrates: 2.93g (1.06%), Sugar: 2.75g (3.06%), Cholesterol: 2.99mg (1%), Sodium: 1.55mg (0.07%), Alcohol: 0g (100%), Alcohol %: 0% (100%), Caffeine: 3.43mg (1.14%), Protein: 0.28g (0.56%), Magnesium: 6.06mg (1.51%), Copper: 0.03mg (1.51%), Manganese: 0.03mg (1.29%), Fiber: 0.29g (1.14%), Vitamin B2: 0.02mg (1.03%)