



WHATSheATE



## Robot Cake



Dairy Free



Popular

READY IN



225 min.

SERVINGS



12

CALORIES



349 kcal

DESSERT

## Ingredients

- ☐ 1 box cake mix yellow
- ☐ 16 oz vanilla frosting
- ☐ 1 serving purple gel food coloring black
- ☐ 1 serving food coloring blue
- ☐ 2 twist and ends together to make a rough knob. cover (7 inch)
- ☐ 2 large gumdrops black
- ☐ 2 m&m candies soft
- ☐ 2 m&m candies blue

- ☐ 3 twist and ends together to make a rough knob. cover red (cherry)
- ☐ 20 m&m candies (any color)
- ☐ 1 snack peppers (any variety from 4.5-oz box)
- ☐ 6 chocolate wafers such as nabisco famous thin
- ☐ 1 serving frangelico with wrapping paper and plastic food wrap or foil (20xes)

## Equipment

- ☐ frying pan
- ☐ oven
- ☐ wire rack
- ☐ kitchen scissors
- ☐ serrated knife

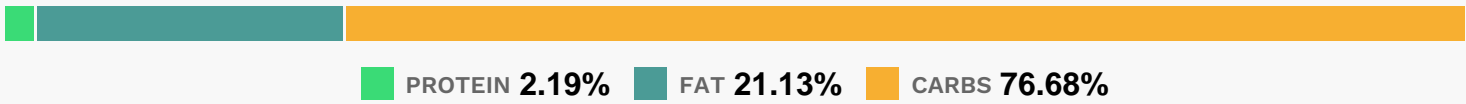
## Directions

- ☐ Heat oven to 350°F (325°F for dark or nonstick pan). Grease or spray bottom and sides of 13x9-inch pan. Make and bake cake as directed on box for 13x9-inch pan. Cool 10 minutes; remove cake from pan to cooling rack. Cool completely, about 1 hour. Refrigerate or freeze cake 1 hour until firm.
- ☐ Tint frosting with black and blue food colors to make desired gray color. Using serrated knife, cut rounded top off cake to level surface; place cake cut side down.
- ☐ Cut cake using templates. (See link below for diagram and templates.) On tray, arrange cake pieces as shown in diagram, attaching to tray with small amount of frosting.
- ☐ Spread thin layer of frosting over top and sides to seal in crumbs. Refrigerate or freeze cake 30 to 60 minutes to set frosting.
- ☐ Frost entire cake with remaining frosting.
- ☐ Cut 1 colorful licorice twist into 2 (1-inch) pieces. Carefully insert licorice pieces between head and body.
- ☐ Cut remaining colorful licorice twist in half. Using scissors, make several cuts in 1 end of each licorice piece to form antennae. Insert licorice pieces, antennae ends up, in top of head. Insert gumdrops into sides of head for ears. Arrange fruit rings on head for eyes; use 2 blue M&M's™ chocolate candies for pupils. Separate 1 pull-apart red licorice twist into single strands. Trim 1 strand to 3 inches; place on head for mouth. Use remaining strands to decorate base of robot

as desired, trimming to fit.

- Tie a knot in each remaining pull-apart red licorice twist. Insert knotted licorice twists in each side of body for arms. To decorate robot body, arrange 20 M&M's™ chocolate candies in desired pattern on body. Use fruit snack to form border around candy design, trimming to fit. For wheels, insert chocolate wafer cookies in base of cake. Store loosely covered.

## Nutrition Facts



### Properties

Glycemic Index:16.88, Glycemic Load:13.58, Inflammation Score:-1, Nutrition Score:4.5726086937863%

### Flavonoids

Luteolin: 0.01mg, Luteolin: 0.01mg, Luteolin: 0.01mg, Luteolin: 0.01mg Quercetin: 0.01mg, Quercetin: 0.01mg, Quercetin: 0.01mg, Quercetin: 0.01mg

### Nutrients (% of daily need)

Calories: 349.3kcal (17.46%), Fat: 8.22g (12.65%), Saturated Fat: 2.24g (13.99%), Carbohydrates: 67.13g (22.38%), Net Carbohydrates: 66.4g (24.15%), Sugar: 46.28g (51.42%), Cholesterol: 0.36mg (0.12%), Sodium: 403.11mg (17.53%), Alcohol: Og (100%), Alcohol %: 0% (100%), Protein: 1.92g (3.84%), Phosphorus: 144.95mg (14.49%), Vitamin B2: 0.22mg (13.17%), Calcium: 95.51mg (9.55%), Folate: 34.8µg (8.7%), Vitamin B1: 0.11mg (7.38%), Vitamin E: 1.03mg (6.89%), Iron: 1.12mg (6.22%), Vitamin K: 6.35µg (6.05%), Vitamin B3: 1.19mg (5.95%), Manganese: 0.11mg (5.3%), Vitamin C: 3mg (3.63%), Fiber: 0.72g (2.9%), Copper: 0.05mg (2.28%), Selenium: 1.52µg (2.17%), Vitamin B6: 0.04mg (2.08%), Vitamin B5: 0.2mg (1.97%), Magnesium: 6.58mg (1.64%), Vitamin A: 77.9IU (1.56%), Potassium: 44.42mg (1.27%), Zinc: 0.18mg (1.21%)