



Rolo®-Filled Chocolate Cookies

 Vegetarian

READY IN



40 min.

SERVINGS



48

CALORIES



112 kcal

DESSERT

Ingredients

- 1 teaspoon baking soda
- 1 cup firmly brown sugar packed
- 1 cup butter softened
- 48 chocolate-covered caramel candies rolo® (such as)
- 2 eggs
- 2.5 cups flour all-purpose
- 0.8 cup cocoa powder unsweetened
- 2 teaspoons vanilla extract

2 tablespoons sugar white

Equipment

bowl

baking sheet

sauce pan

oven

wire rack

Directions

Preheat oven to 375 degrees F (190 degrees C).

Mix flour, cocoa powder, and baking soda together in a small bowl. Beat 1 cup white sugar, brown sugar, and butter together in a large bowl until light and fluffy.

Add vanilla extract and eggs; beat well. Stir flour mixture into sugar mixture; mix well.

Lightly flour hands. Shape about 1 tablespoon dough around 1 chocolate-covered caramel candy, covering it completely. Repeat with remaining dough and caramel candies.

Place 2 tablespoons white sugar in a small bowl. Press one side of each ball into sugar.

Place balls, sugar sides up, onto a baking sheet, about 2 inches apart.

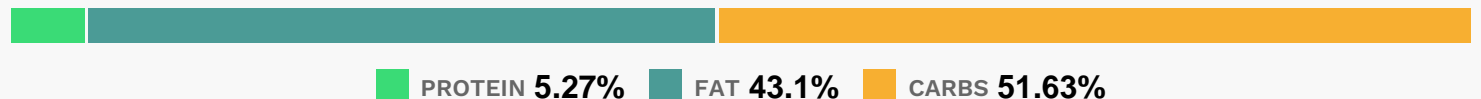
Bake in the preheated oven until cookie is set and slightly cracked, 7 to 10 minutes. Cool on the baking sheet for about 2 minutes.

Transfer cookies to a wire rack to cool completely.

Melt almond bark in a saucepan over low heat.

Drizzle over cookies.

Nutrition Facts



Properties

Glycemic Index:4.06, Glycemic Load:3.94, Inflammation Score:-2, Nutrition Score:2.0352173846053%

Flavonoids

Catechin: 0.87mg, Catechin: 0.87mg, Catechin: 0.87mg, Catechin: 0.87mg Epicatechin: 2.64mg, Epicatechin: 2.64mg, Epicatechin: 2.64mg, Epicatechin: 2.64mg Quercetin: 0.13mg, Quercetin: 0.13mg, Quercetin: 0.13mg, Quercetin: 0.13mg

Nutrients (% of daily need)

Calories: 111.55kcal (5.58%), Fat: 5.51g (8.48%), Saturated Fat: 3.48g (21.73%), Carbohydrates: 14.86g (4.95%), Net Carbohydrates: 14.13g (5.14%), Sugar: 8.85g (9.83%), Cholesterol: 17.71mg (5.9%), Sodium: 68.81mg (2.99%), Alcohol: 0.06g (100%), Alcohol %: 0.28% (100%), Caffeine: 3.45mg (1.15%), Protein: 1.52g (3.03%), Manganese: 0.1mg (4.99%), Selenium: 3.07µg (4.38%), Vitamin B1: 0.05mg (3.62%), Folate: 13.39µg (3.35%), Iron: 0.58mg (3.22%), Copper: 0.06mg (3.2%), Vitamin B2: 0.05mg (3.11%), Fiber: 0.73g (2.91%), Vitamin A: 135.34IU (2.71%), Phosphorus: 26.11mg (2.61%), Magnesium: 8.88mg (2.22%), Vitamin B3: 0.43mg (2.13%), Calcium: 17.39mg (1.74%), Potassium: 48.69mg (1.39%), Vitamin E: 0.2mg (1.33%), Zinc: 0.17mg (1.11%)