



Spiced Coffee With Cinnamon Whipped Cream

 **Gluten Free**  **Dairy Free**  **Low Fod Map**

READY IN



45 min.

SERVINGS



8

CALORIES



157 kcal

BEVERAGE

DRINK

Ingredients

- 0.5 cup amaretto (almond-flavored liqueur)
- 8 cups double-strength coffee brewed
- 1.5 teaspoons ground allspice
- 1.8 teaspoons ground cinnamon plus more for serving
- 1.5 teaspoons ground ginger
- 1 cup sugar
- 0.5 cup water
- 0.5 cup whipped cream

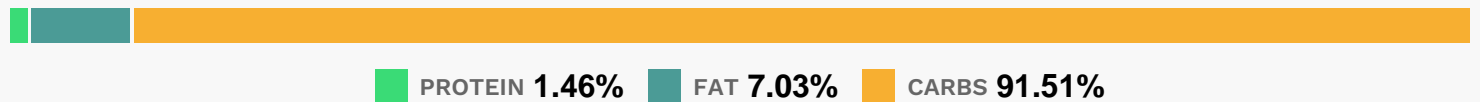
Equipment

- frying pan
- sauce pan

Directions

- Heat a small saucepan over medium heat.
- Add sugar and water; bring to a boil. Reduce heat to low; add allspice, cinnamon, and ginger. Simmer until sugar is dissolved (about 5 minutes); remove pan from heat.
- Add 2 tablespoons spiced syrup to each of 8 cups of coffee; stir to combine.
- Add 1 tablespoon amaretto to each cup; top with a dollop of whipped cream.
- Sprinkle with cinnamon; serve.

Nutrition Facts



Properties

Glycemic Index:18.14, Glycemic Load:17.74, Inflammation Score:-1, Nutrition Score:2.3282609164067%

Flavonoids

Epigallocatechin: 0.09mg, Epigallocatechin: 0.09mg, Epigallocatechin: 0.09mg, Epigallocatechin: 0.09mg
Epicatechin: 0.09mg, Epicatechin: 0.09mg, Epicatechin: 0.09mg, Epicatechin: 0.09mg Myricetin: 0.12mg,
Myricetin: 0.12mg, Myricetin: 0.12mg, Myricetin: 0.12mg Quercetin: 0.12mg, Quercetin: 0.12mg, Quercetin: 0.12mg,
Quercetin: 0.12mg

Nutrients (% of daily need)

Calories: 157.01kcal (7.85%), Fat: 1.06g (1.63%), Saturated Fat: 0.56g (3.5%), Carbohydrates: 31.01g (10.34%), Net Carbohydrates: 30.64g (11.14%), Sugar: 30.02g (33.36%), Cholesterol: 2.85mg (0.95%), Sodium: 7.64mg (0.33%), Alcohol: 3.84g (100%), Alcohol %: 1.64% (100%), Caffeine: 98.64mg (32.88%), Protein: 0.49g (0.99%), Manganese: 0.27mg (13.52%), Vitamin B2: 0.19mg (11.18%), Vitamin B5: 0.62mg (6.17%), Potassium: 137.32mg (3.92%), Vitamin B3: 0.53mg (2.65%), Magnesium: 9.68mg (2.42%), Vitamin B1: 0.04mg (2.39%), Calcium: 16.66mg (1.67%), Fiber: 0.37g (1.46%), Folate: 5.06µg (1.27%), Phosphorus: 12.67mg (1.27%), Iron: 0.18mg (1.02%), Copper: 0.02mg (1.02%)