



## Strawberry-Filled Lemon Cream Cheese Bars

READY IN



135 min.

SERVINGS



32

CALORIES



167 kcal

ANTIPASTI

STARTER

SNACK

APPETIZER

### Ingredients

- 0.5 cup almonds finely chopped
- 8 oz cream cheese softened
- 1 eggs
- 0.3 cup flour all-purpose gold medal®
- 0.5 cup butter softened
- 0.5 cup margarita cocktail frozen thawed
- 0.1 teaspoon salt
- 1 cup strawberry jam
- 0.3 cup sugar

1 box cake mix yellow betty crocker® supermoist®

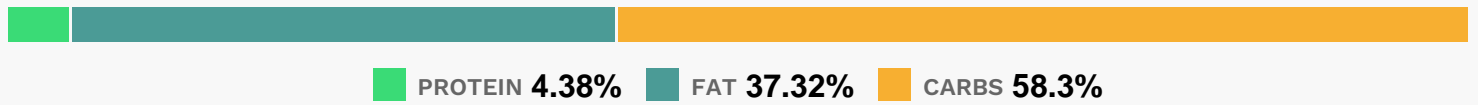
## Equipment

- bowl
- frying pan
- oven
- blender
- hand mixer

## Directions

- Heat oven to 350°F (325°F for dark or nonstick pan). Grease 13x9-inch pan.
- Place cake mix in large bowl. With pastry blender or fork, cut in butter until crumbly.
- Add almonds; mix well. Reserve 1 cup mixture for topping. Press remaining mixture in bottom of pan. Stir preserves until smooth; carefully spread over base.
- In same bowl, beat cream cheese, sugar, flour, salt and egg with electric mixer at medium speed until well blended.
- Add margarita mix; beat at low speed until blended. Carefully pour filling over base.
- Sprinkle reserved base mixture over filling.
- Bake 34 to 41 minutes or until edges begin to brown and center is set. Cool completely, about 1 hour.
- Cut into bars. Store covered in refrigerator.

## Nutrition Facts



## Properties

Glycemic Index:7.41, Glycemic Load:5.72, Inflammation Score:-2, Nutrition Score:2.8426086928533%

## Flavonoids

Cyanidin: 0.05mg, Cyanidin: 0.05mg, Cyanidin: 0.05mg, Cyanidin: 0.05mg Catechin: 0.03mg, Catechin: 0.03mg, Catechin: 0.03mg, Catechin: 0.03mg Epigallocatechin: 0.06mg, Epigallocatechin: 0.06mg, Epigallocatechin:

0.06mg, Epigallocatechin: 0.06mg Epicatechin: 0.01mg, Epicatechin: 0.01mg, Epicatechin: 0.01mg, Epicatechin:  
0.01mg Eriodictyol: 0.01mg, Eriodictyol: 0.01mg, Eriodictyol: 0.01mg, Eriodictyol: 0.01mg Naringenin: 0.01mg,  
Naringenin: 0.01mg, Naringenin: 0.01mg, Naringenin: 0.01mg Isorhamnetin: 0.06mg, Isorhamnetin: 0.06mg,  
Isorhamnetin: 0.06mg, Isorhamnetin: 0.06mg Kaempferol: 0.01mg, Kaempferol: 0.01mg, Kaempferol: 0.01mg,  
Kaempferol: 0.01mg Quercetin: 0.01mg, Quercetin: 0.01mg, Quercetin: 0.01mg, Quercetin: 0.01mg

## **Nutrients (% of daily need)**

Calories: 167.02kcal (8.35%), Fat: 7.01g (10.78%), Saturated Fat: 2.42g (15.1%), Carbohydrates: 24.64g (8.21%), Net  
Carbohydrates: 24.02g (8.73%), Sugar: 14.86g (16.51%), Cholesterol: 12.27mg (4.09%), Sodium: 190.43mg (8.28%),  
Alcohol: 0g (100%), Alcohol %: 0% (100%), Protein: 1.85g (3.71%), Phosphorus: 75.03mg (7.5%), Vitamin E: 0.92mg  
(6.13%), Vitamin B2: 0.1mg (5.88%), Calcium: 51.1mg (5.11%), Manganese: 0.09mg (4.7%), Vitamin A: 229.5IU (4.59%),  
Folate: 16.24µg (4.06%), Vitamin B1: 0.05mg (3.59%), Selenium: 2.16µg (3.09%), Iron: 0.55mg (3.05%), Vitamin B3:  
0.52mg (2.62%), Fiber: 0.62g (2.47%), Copper: 0.05mg (2.45%), Magnesium: 9.2mg (2.3%), Vitamin B5: 0.14mg  
(1.4%), Potassium: 45.97mg (1.31%), Vitamin B6: 0.02mg (1.23%), Zinc: 0.18mg (1.2%), Vitamin C: 0.94mg (1.14%)