



Strawberry-Kiwi-Spinach Toss

 **Gluten Free**

READY IN



15 min.

SERVINGS



12

CALORIES



160 kcal

SIDE DISH

Ingredients

- 4 oz edam cheese
- 1 teaspoon ground ginger grated
- 0.3 cup honey
- 6 kiwi fruit cut into bite-size pieces (2 cups)
- 0.3 cup juice of lime
- 0.7 cup pecans
- 10 cups pkt spinach fresh
- 1 pint strawberries cut in half (2 cups)

2 tablespoons vegetable oil

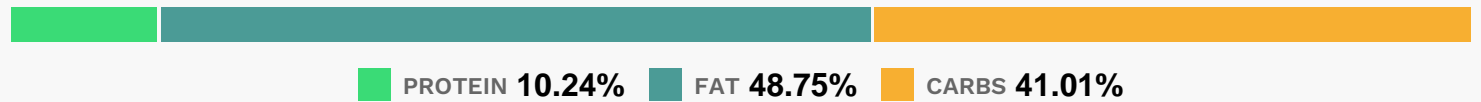
Equipment

bowl

Directions

- In large bowl, mix spinach, strawberries, kiwifruit, pecans and cheese.
- In tightly covered container, shake all remaining ingredients until smooth.
- Pour over salad; toss to mix.

Nutrition Facts



Properties

Glycemic Index:17.83, Glycemic Load:6.74, Inflammation Score:-9, Nutrition Score:17.460869460002%

Flavonoids

Cyanidin: 1.25mg, Cyanidin: 1.25mg, Cyanidin: 1.25mg, Cyanidin: 1.25mg Petunidin: 0.04mg, Petunidin: 0.04mg, Petunidin: 0.04mg, Petunidin: 0.04mg Delphinidin: 0.52mg, Delphinidin: 0.52mg, Delphinidin: 0.52mg, Delphinidin: 0.52mg Pelargonidin: 9.8mg, Pelargonidin: 9.8mg, Pelargonidin: 9.8mg, Pelargonidin: 9.8mg Peonidin: 0.02mg, Peonidin: 0.02mg, Peonidin: 0.02mg, Peonidin: 0.02mg Catechin: 1.62mg, Catechin: 1.62mg, Catechin: 1.62mg, Catechin: 1.62mg Epigallocatechin: 0.62mg, Epigallocatechin: 0.62mg, Epigallocatechin: 0.62mg, Epigallocatechin: 0.62mg Epicatechin: 0.33mg, Epicatechin: 0.33mg, Epicatechin: 0.33mg, Epicatechin: 0.33mg Epicatechin 3-gallate: 0.06mg, Epicatechin 3-gallate: 0.06mg, Epicatechin 3-gallate: 0.06mg, Epicatechin 3-gallate: 0.06mg Epigallocatechin 3-gallate: 0.21mg, Epigallocatechin 3-gallate: 0.21mg, Epigallocatechin 3-gallate: 0.21mg, Epigallocatechin 3-gallate: 0.21mg Eriodictyol: 0.11mg, Eriodictyol: 0.11mg, Eriodictyol: 0.11mg, Eriodictyol: 0.11mg Hesperetin: 0.45mg, Hesperetin: 0.45mg, Hesperetin: 0.45mg, Hesperetin: 0.45mg Naringenin: 0.12mg, Naringenin: 0.12mg, Naringenin: 0.12mg, Naringenin: 0.12mg Luteolin: 0.52mg, Luteolin: 0.52mg, Luteolin: 0.52mg, Luteolin: 0.52mg Kaempferol: 2.26mg, Kaempferol: 2.26mg, Kaempferol: 2.26mg, Kaempferol: 2.26mg Myricetin: 0.1mg, Myricetin: 0.1mg, Myricetin: 0.1mg, Myricetin: 0.1mg Quercetin: 1.47mg, Quercetin: 1.47mg, Quercetin: 1.47mg, Quercetin: 1.47mg Gallocatechin: 0.01mg, Gallocatechin: 0.01mg, Gallocatechin: 0.01mg, Gallocatechin: 0.01mg

Nutrients (% of daily need)

Calories: 159.83kcal (7.99%), Fat: 9.28g (14.28%), Saturated Fat: 2.39g (14.91%), Carbohydrates: 17.57g (5.86%), Net Carbohydrates: 14.28g (5.19%), Sugar: 12.37g (13.74%), Cholesterol: 8.41mg (2.8%), Sodium: 114.04mg (4.96%), Alcohol: 0g (100%), Alcohol %: 0% (100%), Protein: 4.38g (8.77%), Vitamin K: 144.56µg (137.68%), Vitamin C:

65.81mg (79.77%), Vitamin A: 2472.18IU (49.44%), Manganese: 0.73mg (36.58%), Folate: 73.18µg (18.3%), Fiber: 3.29g (13.16%), Calcium: 121.23mg (12.12%), Magnesium: 42.55mg (10.64%), Phosphorus: 104.34mg (10.43%), Vitamin E: 1.51mg (10.06%), Potassium: 342.01mg (9.77%), Copper: 0.19mg (9.33%), Vitamin B2: 0.11mg (6.76%), Iron: 1.2mg (6.65%), Vitamin B6: 0.12mg (5.92%), Zinc: 0.88mg (5.87%), Vitamin B1: 0.08mg (5.49%), Selenium: 2.23µg (3.19%), Vitamin B3: 0.61mg (3.03%), Vitamin B12: 0.15µg (2.43%), Vitamin B5: 0.23mg (2.35%)