



WHAT'SheATe



## Surprise Graduation Cupcakes

READY IN



125 min.

SERVINGS



24

CALORIES



336 kcal

DESSERT

### Ingredients

- ☐ 1 box duncan hines devil's food cake
- ☐ 24 chocolate
- ☐ 3 cups powdered sugar
- ☐ 0.3 cup butter softened
- ☐ 2 oz chocolate bar white melted (from 6-oz package)
- ☐ 1 teaspoon vanilla
- ☐ 3 tablespoons milk
- ☐ 0.5 cup chocolate chips dark melted

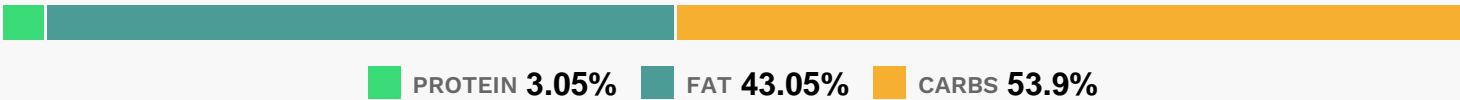
## Equipment

- ☐ bowl
- ☐ oven
- ☐ hand mixer
- ☐ muffin liners

## Directions

- ☐ Heat oven to 350°F (325°F for dark or nonstick pans).
- ☐ Place paper baking cup in each of 24 regular-size muffin cups. Make cake batter as directed on box. Divide batter evenly among muffin cups (about two-thirds full). Press 1 milk chocolate drop in center of each muffin cup.
- ☐ Bake and cool as directed on box for 24 cupcakes.
- ☐ In medium bowl, beat powdered sugar, butter, melted baking bar and vanilla with electric mixer on low speed until blended. Gradually beat in milk until smooth and creamy. Frost cupcakes; pipe year with melted dark chocolate onto each cupcake. Store loosely covered.

## Nutrition Facts



## Properties

Glycemic Index:4.32, Glycemic Load:6.77, Inflammation Score:-3, Nutrition Score:4.9956521565985%

## Nutrients (% of daily need)

Calories: 336kcal (16.8%), Fat: 17.17g (26.41%), Saturated Fat: 8.44g (52.73%), Carbohydrates: 48.35g (16.12%), Net Carbohydrates: 45.98g (16.72%), Sugar: 37.94g (42.15%), Cholesterol: 0.33mg (0.11%), Sodium: 188.22mg (8.18%), Alcohol: 0.06g (100%), Alcohol %: 0.1% (100%), Caffeine: 22.35mg (7.45%), Protein: 2.73g (5.47%), Copper: 0.28mg (14.12%), Magnesium: 47.18mg (11.79%), Manganese: 0.23mg (11.54%), Iron: 1.92mg (10.68%), Phosphorus: 104.39mg (10.44%), Fiber: 2.37g (9.49%), Vitamin B2: 0.11mg (6.55%), Potassium: 185.91mg (5.31%), Zinc: 0.78mg (5.23%), Calcium: 50.23mg (5.02%), Selenium: 3.5µg (5%), Folate: 12.82µg (3.2%), Vitamin E: 0.44mg (2.96%), Vitamin B1: 0.04mg (2.81%), Vitamin K: 2.91µg (2.78%), Vitamin B3: 0.54mg (2.71%), Vitamin A: 117.65IU (2.35%), Vitamin B6: 0.03mg (1.32%)