



Susan's Key Lime Martini

 Dairy Free

READY IN



10 min.

SERVINGS



2

CALORIES



206 kcal

BEVERAGE

DRINK

Ingredients

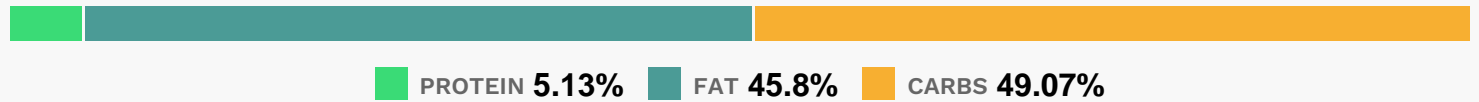
- 1 dash almond syrup flavored
- 1 graham cracker crushed fine
- 1 cup ice cubes
- 2 lime wedges
- 0.5 fluid ounce melon liqueur midori® (such as)
- 2.5 fluid ounces pineapple juice
- 1.5 fluid ounces vanilla vodka flavored
- 1 cup whipped cream

Equipment

Directions

- Spread the graham cracker crumbs onto a small, shallow plate. Moisten the rims of 2 martini glasses with the lime wedges; reserve the lime wedges. Dip the moistened glasses into the graham cracker crumbs and set aside. Reserve the lime wedges and remaining graham cracker crumbs to use as a garnish.
- Pour the vodka, melon liqueur, pineapple juice, almond syrup, and whipped cream into a cocktail shaker over ice. Cover and shake until the outside of the shaker has frosted. Strain into the rimmed glasses.
- Place a lime wedge on the edge of each glass and sprinkle the cocktails with some of the reserved graham cracker crumbs to garnish.

Nutrition Facts



Properties

Glycemic Index:116, Glycemic Load:8.43, Inflammation Score:-3, Nutrition Score:3.3995652121046%

Flavonoids

Cyanidin: 0.01mg, Cyanidin: 0.01mg, Cyanidin: 0.01mg, Cyanidin: 0.01mg Catechin: 0.01mg, Catechin: 0.01mg, Catechin: 0.01mg, Catechin: 0.01mg Epigallocatechin: 0.01mg, Epigallocatechin: 0.01mg, Epigallocatechin: 0.01mg, Epigallocatechin: 0.01mg Hesperetin: 7.74mg, Hesperetin: 7.74mg, Hesperetin: 7.74mg, Hesperetin: 7.74mg Naringenin: 0.61mg, Naringenin: 0.61mg, Naringenin: 0.61mg, Naringenin: 0.61mg Isorhamnetin: 0.01mg, Isorhamnetin: 0.01mg, Isorhamnetin: 0.01mg, Isorhamnetin: 0.01mg Quercetin: 0.07mg, Quercetin: 0.07mg, Quercetin: 0.07mg, Quercetin: 0.07mg

Nutrients (% of daily need)

Calories: 205.63kcal (10.28%), Fat: 7.7g (11.84%), Saturated Fat: 4.28g (26.78%), Carbohydrates: 18.55g (6.18%), Net Carbohydrates: 17.67g (6.43%), Sugar: 10.71g (11.9%), Cholesterol: 22.8mg (7.6%), Sodium: 55.77mg (2.42%), Alcohol: 8.64g (100%), Alcohol %: 4.56% (100%), Protein: 1.94g (3.88%), Vitamin C: 8.93mg (10.83%), Manganese: 0.2mg (9.97%), Calcium: 51.47mg (5.15%), Phosphorus: 50.55mg (5.06%), Vitamin A: 216.35IU (4.33%), Magnesium: 15.48mg (3.87%), Vitamin B1: 0.06mg (3.74%), Potassium: 126.79mg (3.62%), Fiber: 0.88g (3.51%), Copper: 0.07mg (3.43%), Vitamin B2: 0.05mg (3.23%), Vitamin B6: 0.06mg (3.23%), Folate: 12.43µg (3.11%), Iron: 0.55mg (3.04%), Vitamin E: 0.37mg (2.45%), Zinc: 0.33mg (2.23%), Vitamin B3: 0.41mg (2.07%), Vitamin B5: 0.15mg (1.54%), Vitamin

B12: 0.09µg (1.45%)