



Traditional Raspberry Mousse Brownies

READY IN



285 min.

SERVINGS



24

CALORIES



375 kcal

DESSERT

Ingredients

- ☐ 1 box brownie mix betty crocker®
- ☐ 1 container cream cheese frosting betty crocker®
- ☐ 0.3 cup raspberry jelly red
- ☐ 10 oz semi chocolate chips
- ☐ 24 servings vegetable oil for on brownie mix box
- ☐ 1 tablespoon whipping cream

Equipment

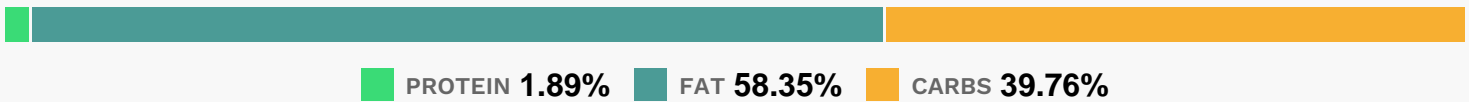
- ☐ bowl

- ☐ frying pan
- ☐ oven
- ☐ hand mixer
- ☐ aluminum foil
- ☐ microwave

Directions

- ☐ Heat oven to 350°F. Grease bottom only of 13x9-inch pan with cooking spray or shortening (for easier cutting, line pan with foil, then grease foil on bottom only of pan). Make brownies as directed on box for 13x9-inch pan. Cool completely, about 1 hour.
- ☐ Reserve 1/4 cup chocolate chips for drizzle. In large microwavable bowl, place remaining chocolate chips and 1 1/4 cups whipping cream and jelly. Microwave uncovered on High 2 to 3 minutes, stirring once every minute, until chocolate is melted. Stir until mixture is smooth (jelly may not be totally melted). Refrigerate about 30 minutes or until slightly thickened.
- ☐ Add frosting to chocolate mixture. Beat with electric mixer on high speed 1 to 2 minutes or until well blended and soft peaks form.
- ☐ Spread over cooled brownies, smoothing top.
- ☐ In small microwavable bowl, microwave reserved 1/4 cup chocolate chips and 1 tablespoon whipping cream uncovered on High 30 to 45 seconds, stirring once, until mixture can be stirred smooth.
- ☐ Drizzle over frosting mixture. Refrigerate 1 to 2 hours or until set.
- ☐ Cut into 12 squares; cut each square diagonally in half to make triangles.
- ☐ Garnish with raspberries.

Nutrition Facts



Properties

Glycemic Index:2.29, Glycemic Load:1.16, Inflammation Score:-1, Nutrition Score:3.458260876653%

Nutrients (% of daily need)

Calories: 374.97kcal (18.75%), Fat: 24.59g (37.83%), Saturated Fat: 6.29g (39.34%), Carbohydrates: 37.7g (12.57%), Net Carbohydrates: 36.72g (13.35%), Sugar: 28.4g (31.55%), Cholesterol: 1.41mg (0.47%), Sodium: 100.45mg (4.37%), Alcohol: Og (100%), Alcohol %: 0% (100%), Caffeine: 10.16mg (3.39%), Protein: 1.79g (3.58%), Vitamin K: 26.62µg (25.35%), Vitamin E: 1.22mg (8.16%), Manganese: 0.16mg (8.01%), Iron: 1.39mg (7.74%), Copper: 0.15mg (7.72%), Magnesium: 21.34mg (5.33%), Fiber: 0.98g (3.92%), Phosphorus: 32.23mg (3.22%), Potassium: 76.57mg (2.19%), Zinc: 0.32mg (2.13%), Selenium: 1.17µg (1.67%)